

25) BRASS TUBE BOLTED TO FRAME  
#1, BEING 13-3/4" LONG,  
1" I.D., 1/8" WALL

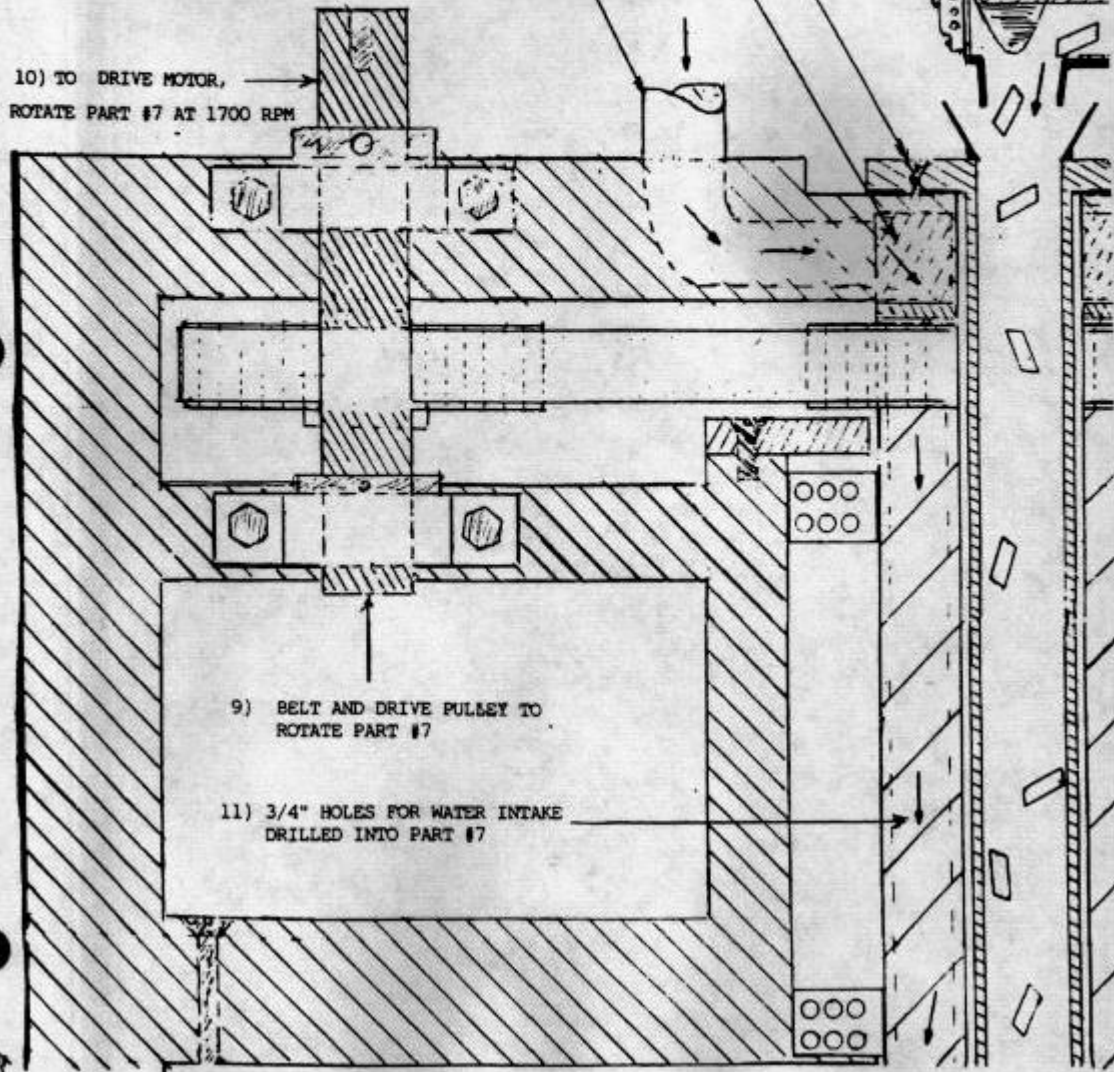
12) STATIONARY WATER HOLDING  
CHAMBER BOLTED TO FRAME #1

14) DIRTY WATER INTAKE PIPE (52 #  
PRESSURE) TO FEED 3/4"  
COPPER LINE

10) TO DRIVE MOTOR,  
ROTATE PART #7 AT 1700 RPM

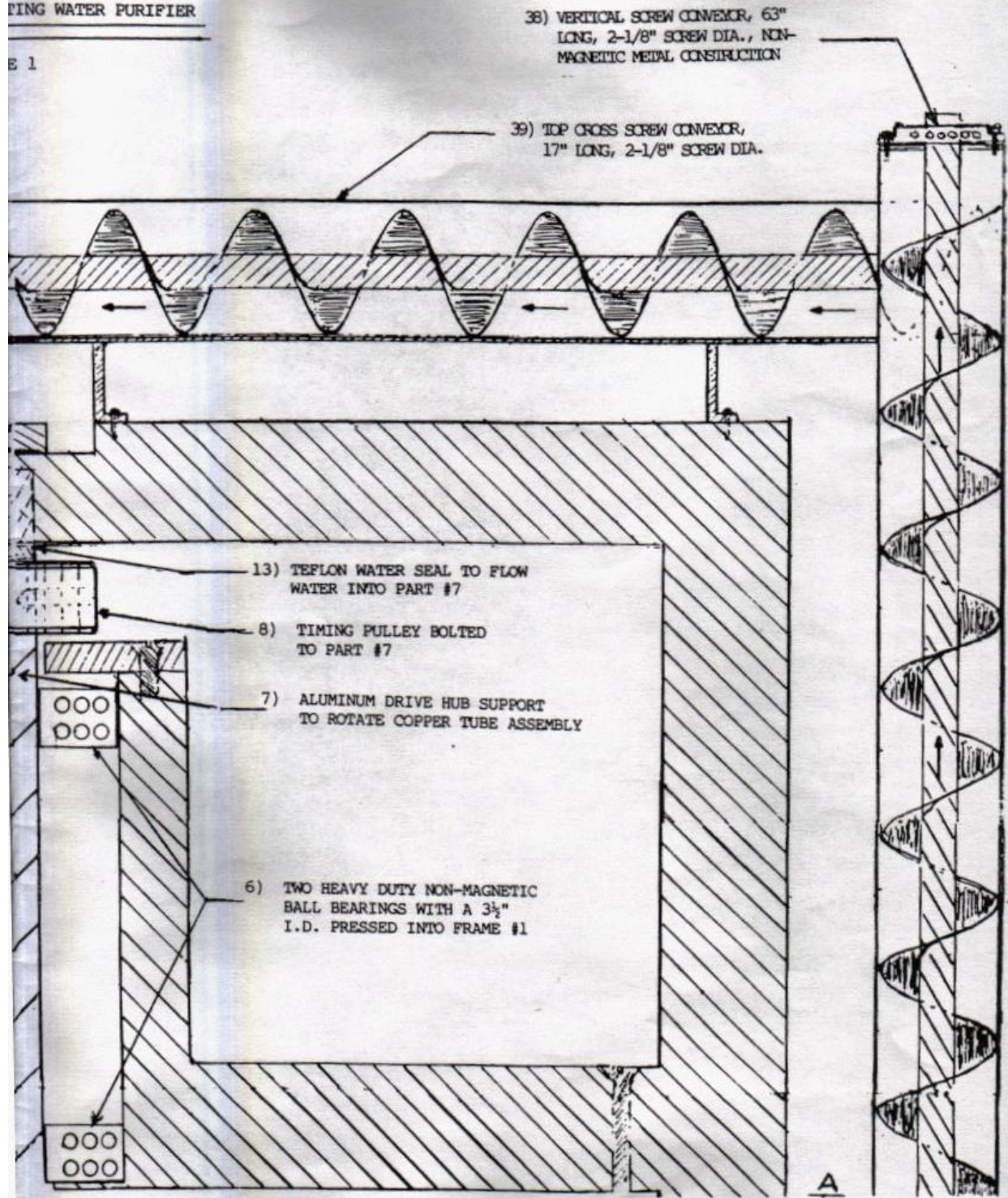
9) BELT AND DRIVE PULLEY TO  
ROTATE PART #7

11) 3/4" HOLES FOR WATER INTAKE  
DRILLED INTO PART #7

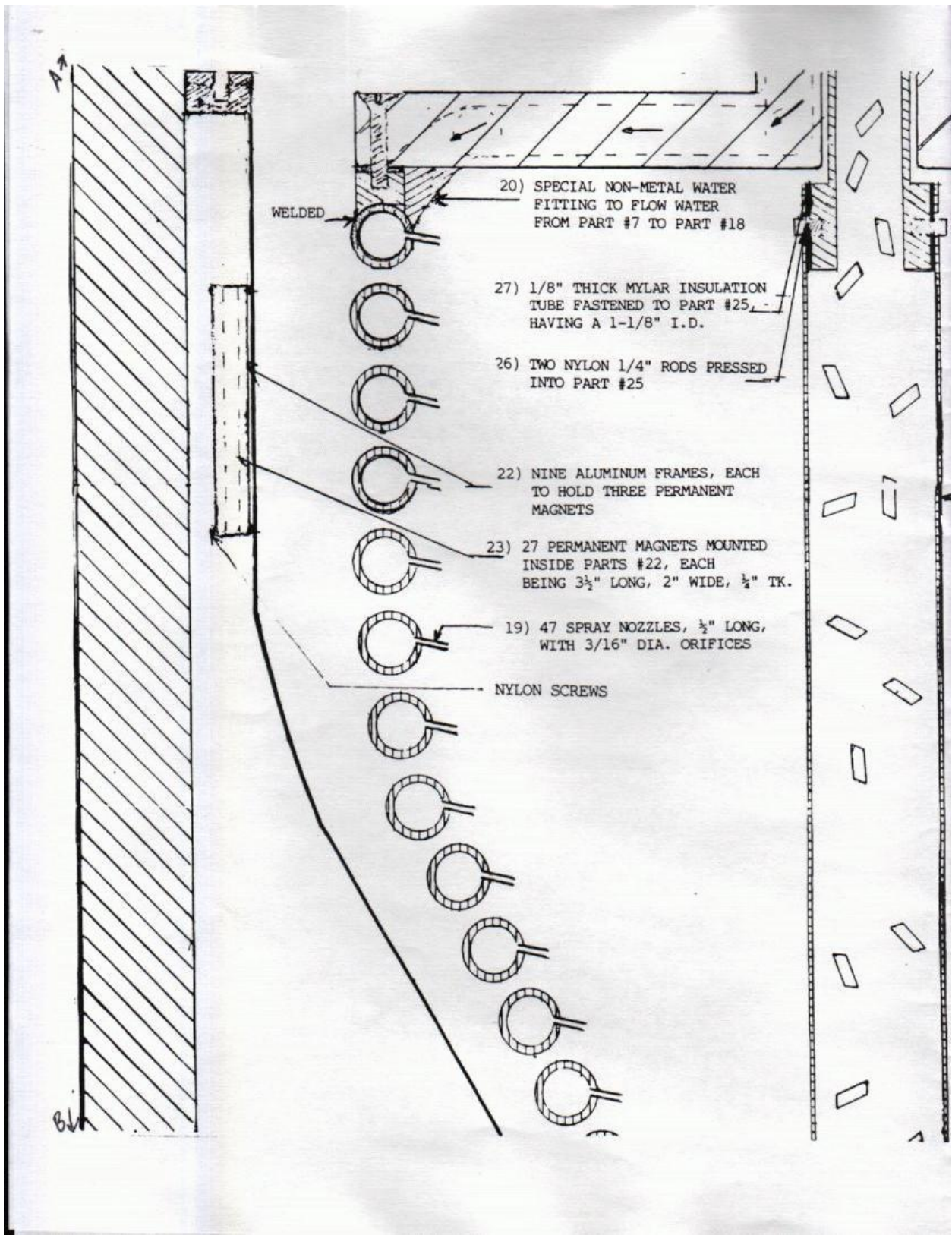


PING WATER PURIFIER

E 1







20) SPECIAL NON-METAL WATER FITTING TO FLOW WATER FROM PART #7 TO PART #18

27) 1/8" THICK MYLAR INSULATION TUBE FASTENED TO PART #25, HAVING A 1-1/8" I.D.

26) TWO NYLON 1/4" RODS PRESSED INTO PART #25

22) NINE ALUMINUM FRAMES, EACH TO HOLD THREE PERMANENT MAGNETS

23) 27 PERMANENT MAGNETS MOUNTED INSIDE PARTS #22, EACH BEING 3 1/2" LONG, 2" WIDE, 1/2" TK.

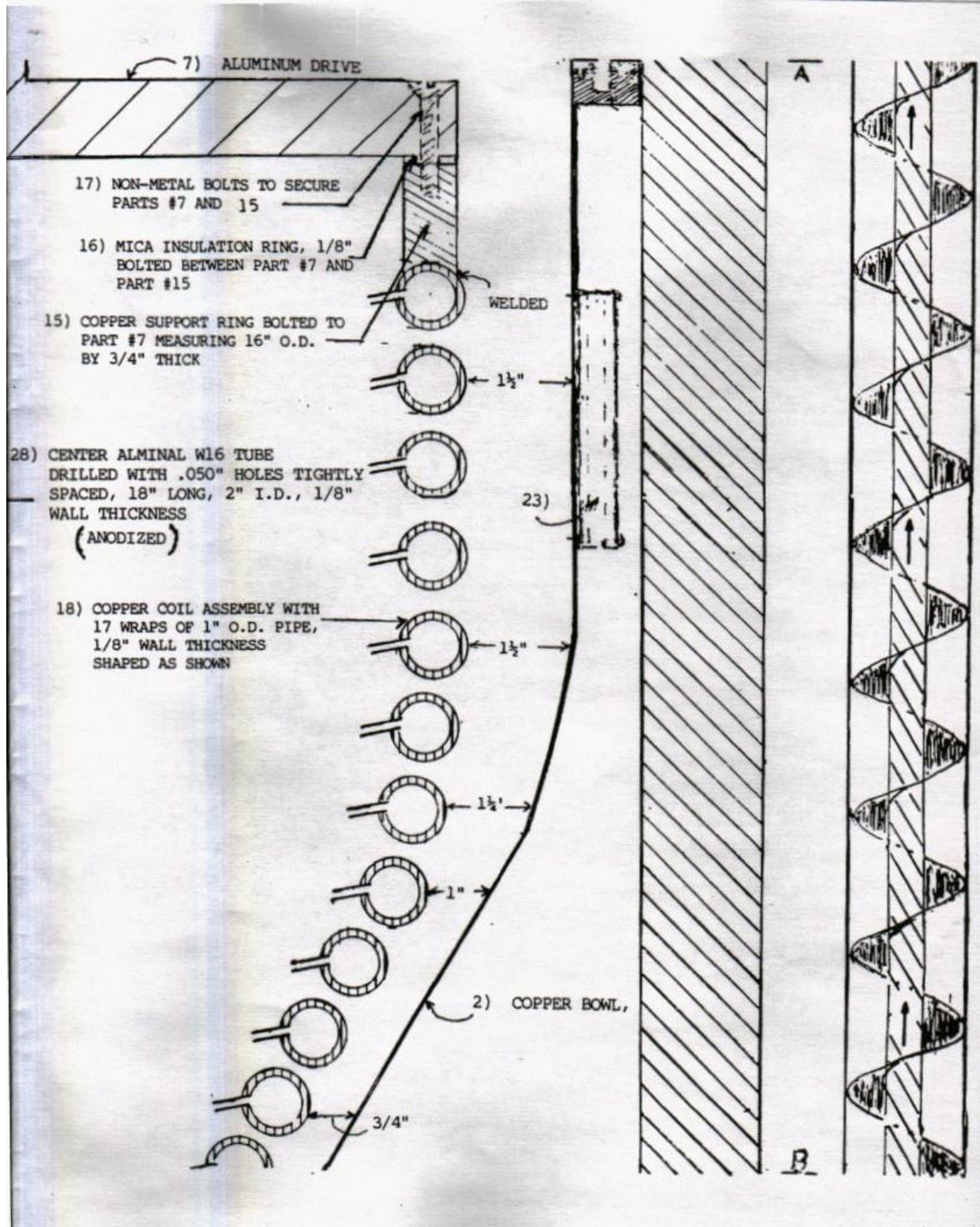
19) 47 SPRAY NOZZLES, 1/2" LONG, WITH 3/16" DIA. ORIFICES

NYLON SCREWS

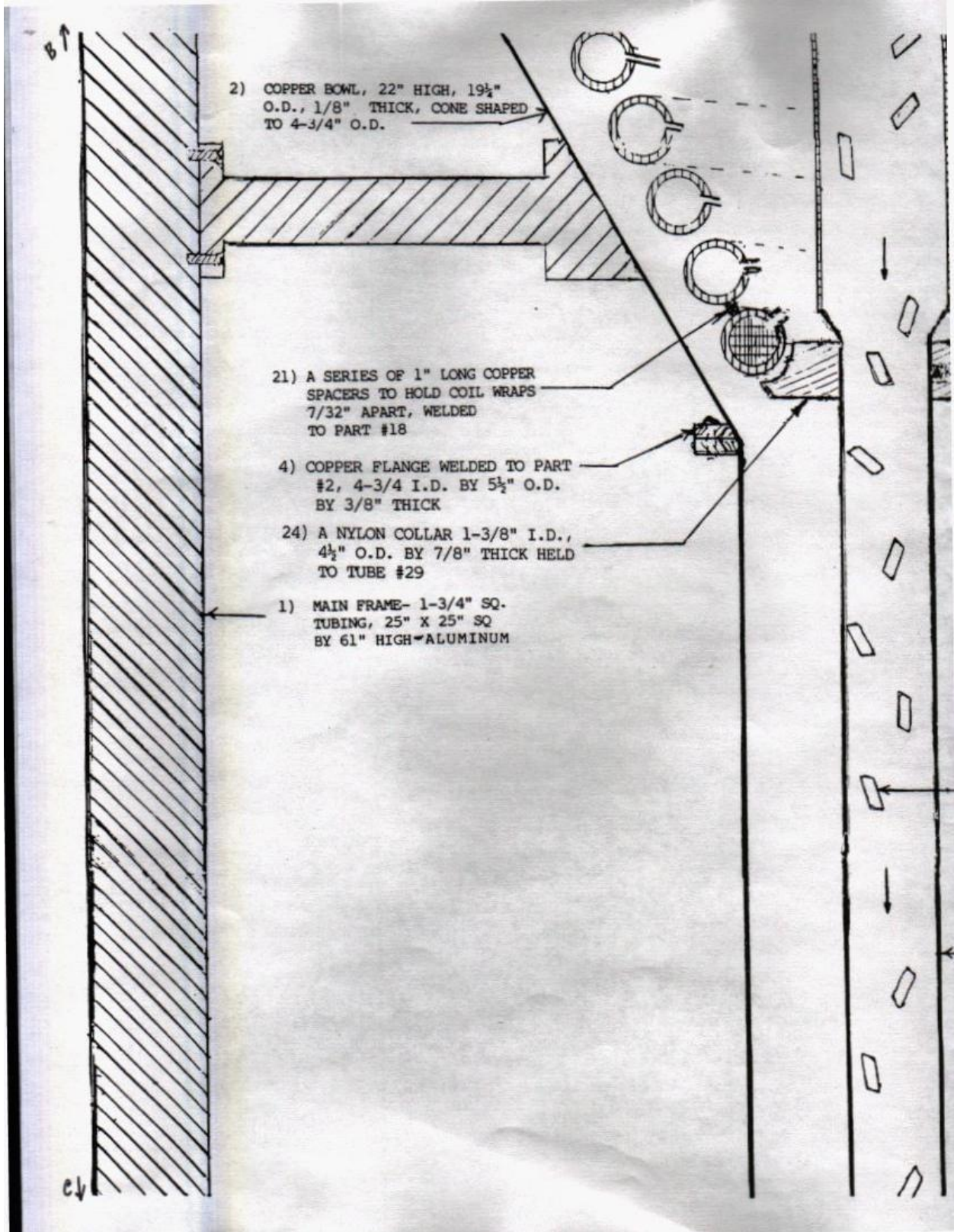
WELDED

A

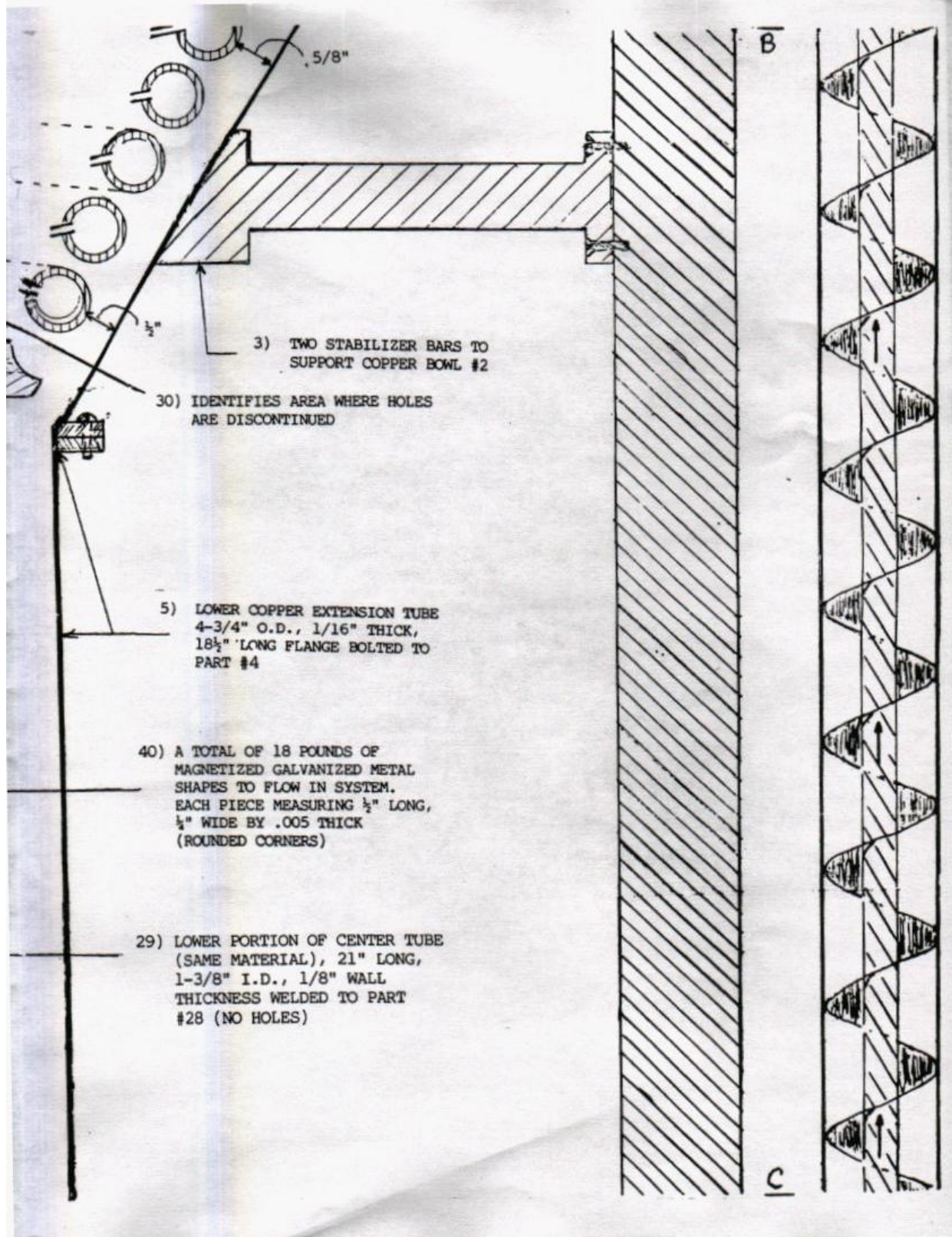
B



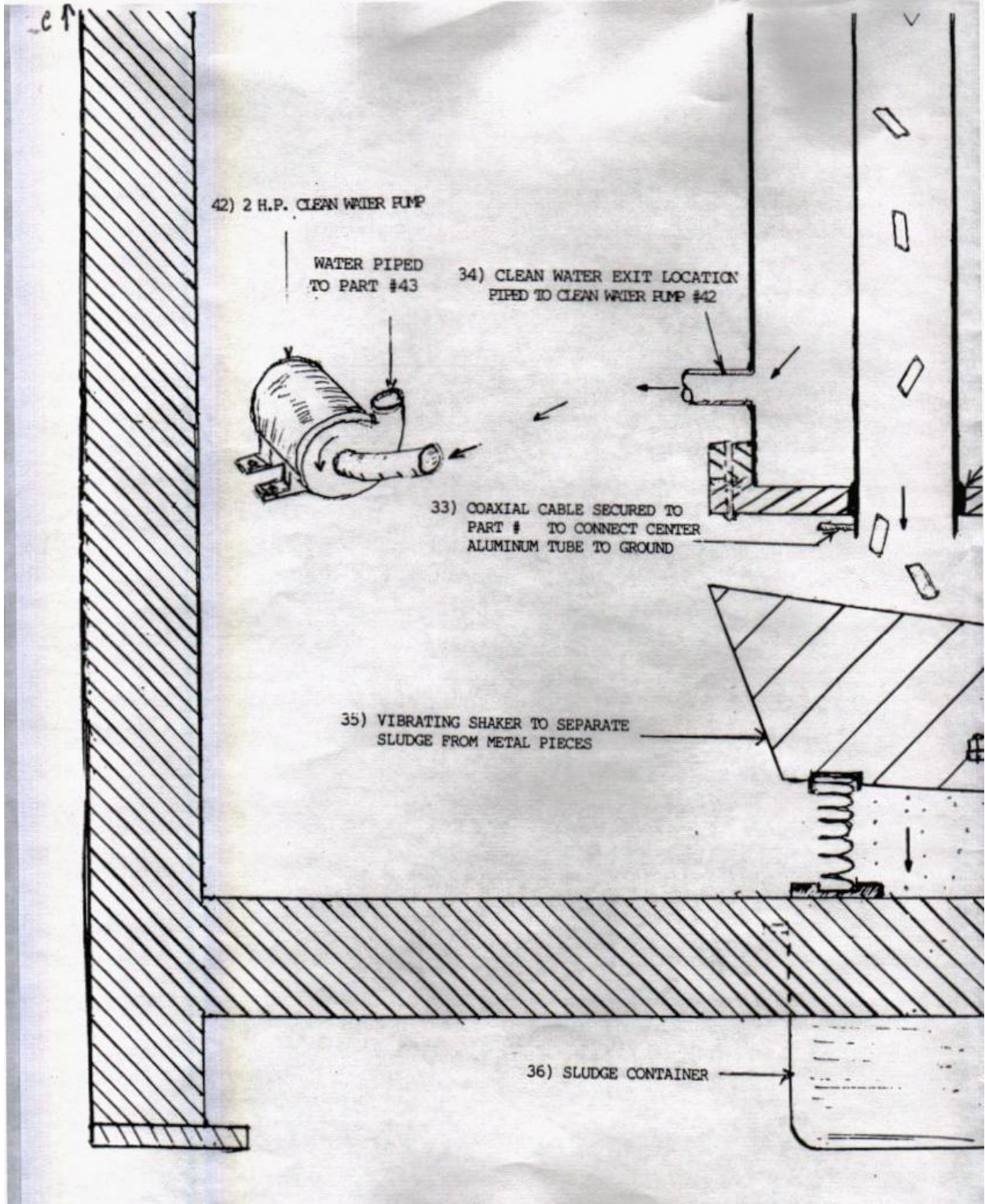


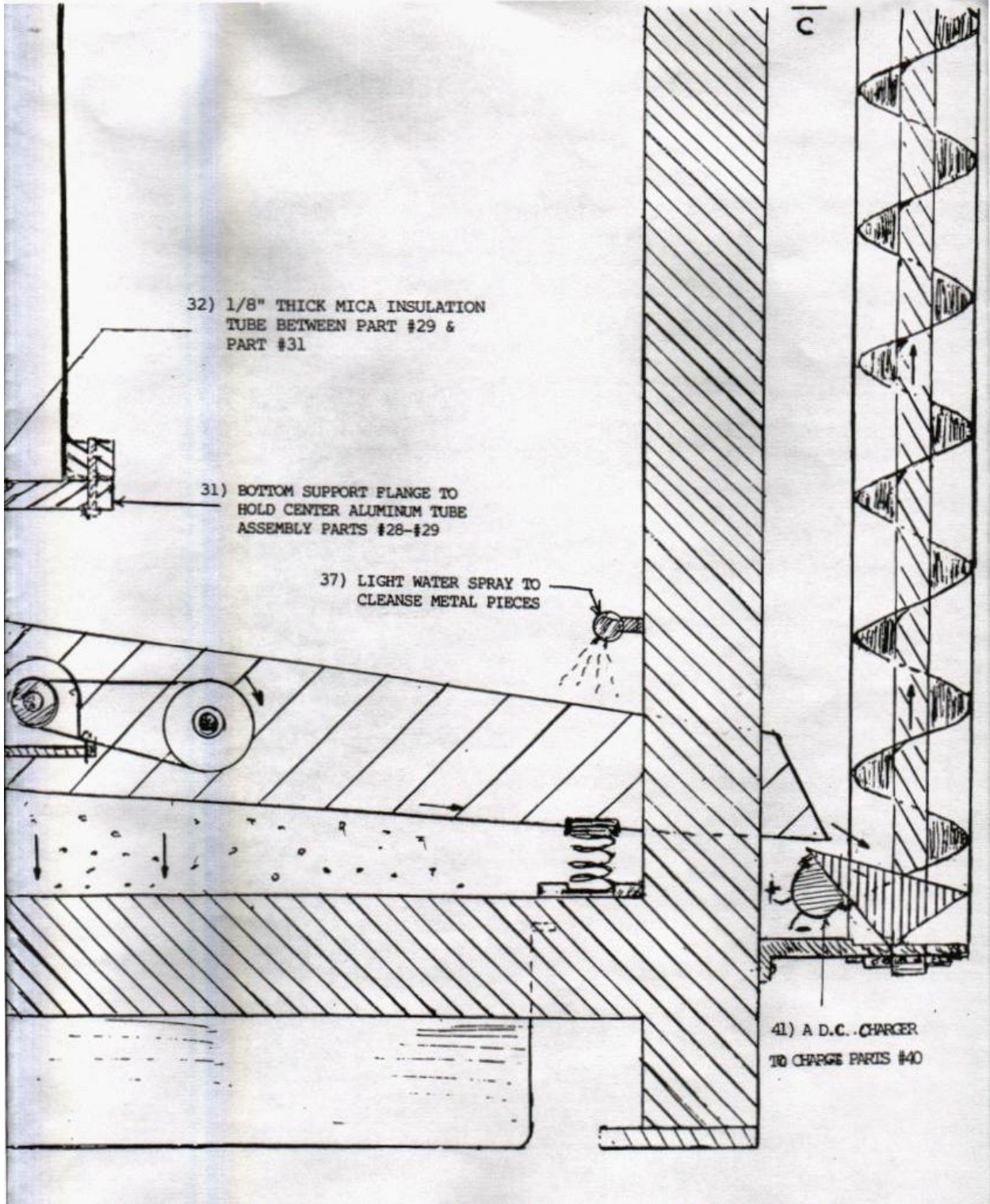






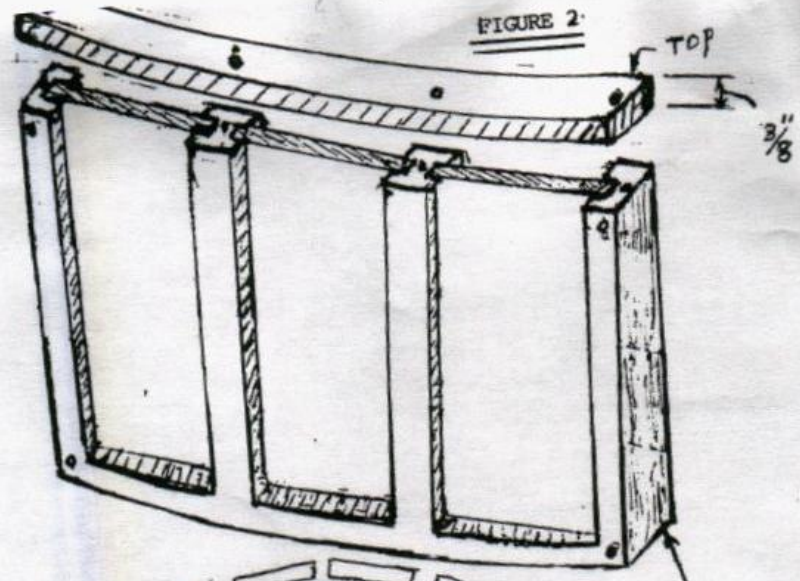




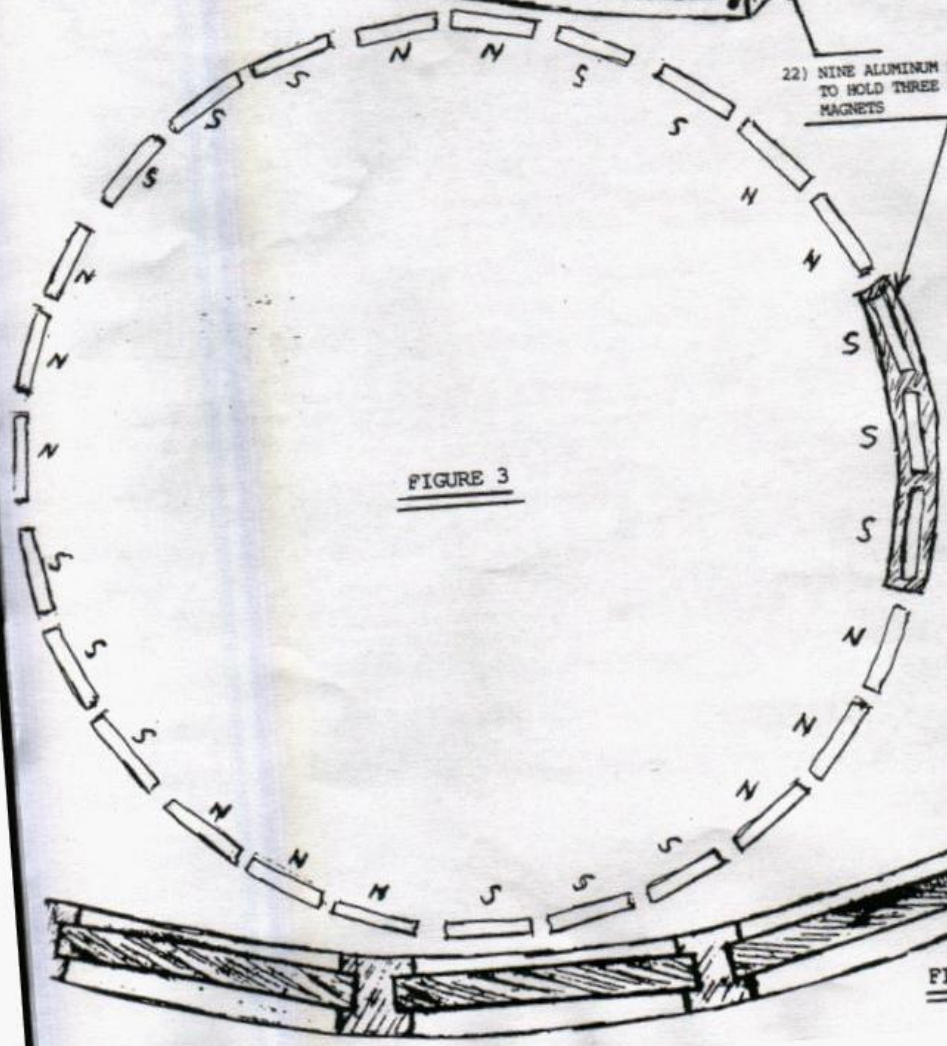




107  
17 WRAPS  
1/8" WALL



22) NINE ALUMINUM FRAMES, EACH TO HOLD THREE PERMANENT MAGNETS



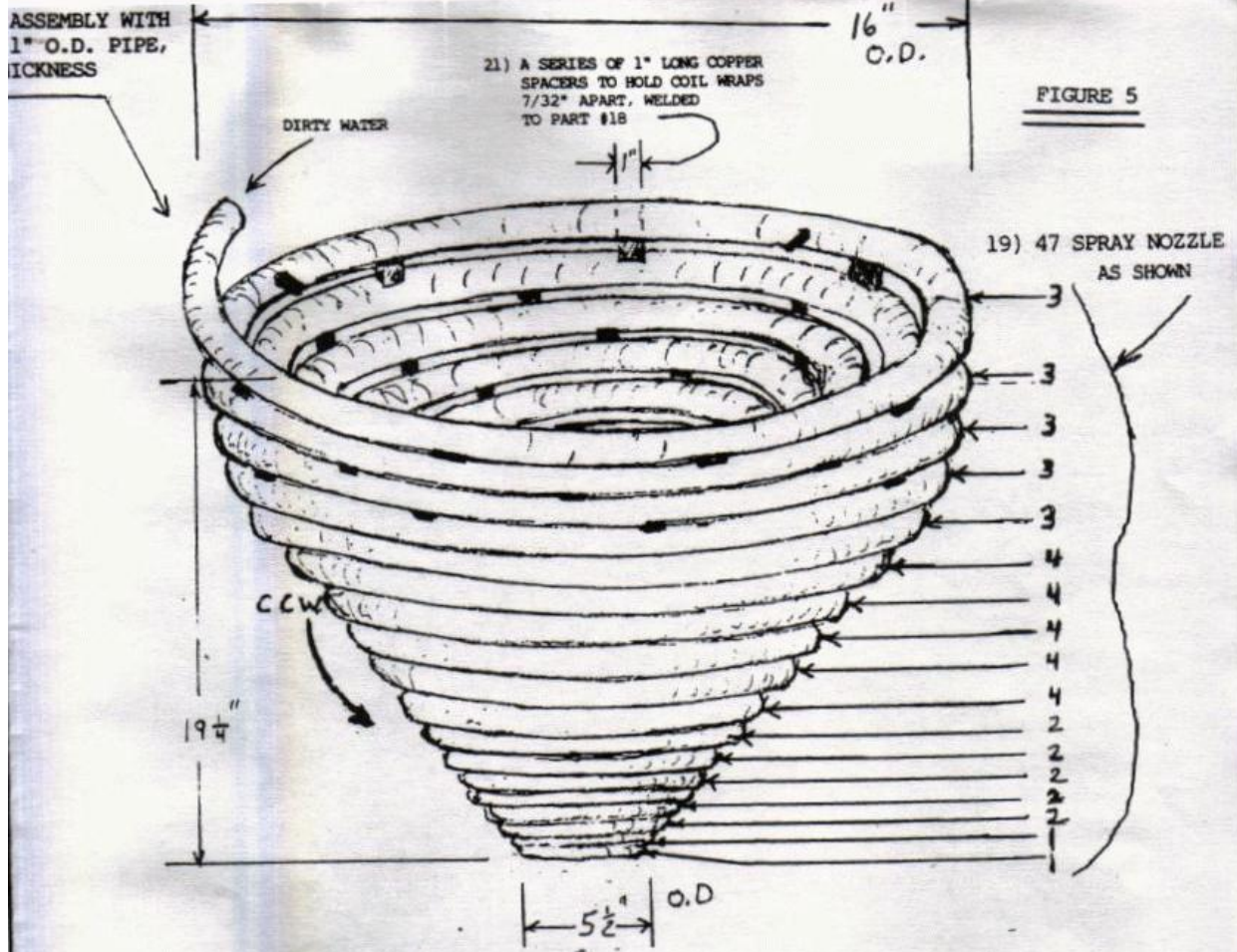


FIGURE 5

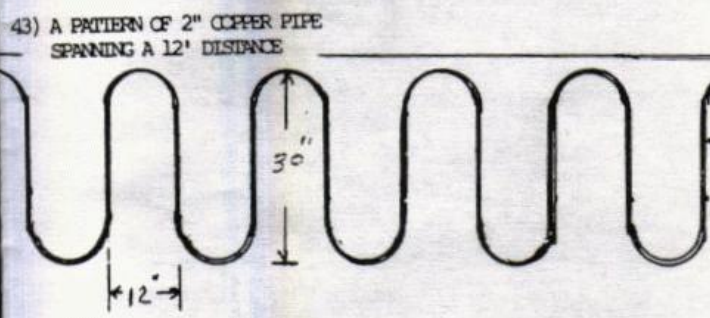


FIGURE 6

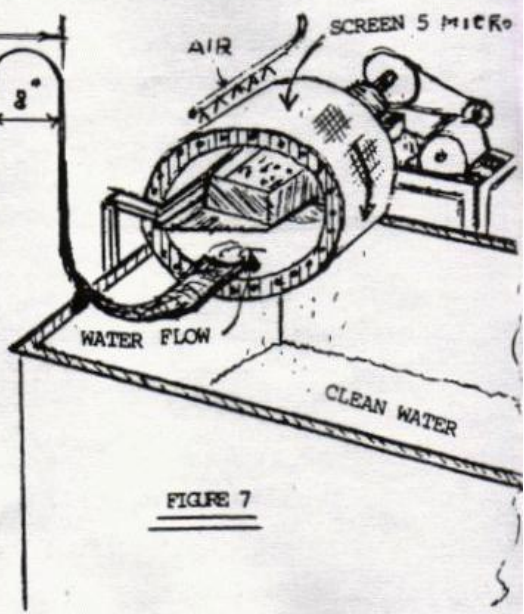


FIGURE 7